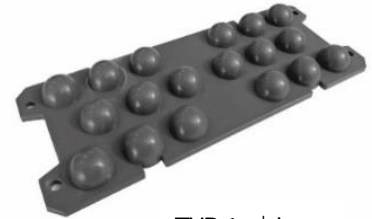


# STAPELPLATTE

## Application:

The STAPELPLATTE with burls is used for transport and storage of prefabricated elements. Depending on the type, they can also be fixed in an angled position or hooked onto the elements when used vertically. The STAPELPLATTE with plug-in coupling can also be extended as required. We recommend an additional transport protection against slipping of the cargo.



TYP 1 - big

## Installation:

- Solid plastic with very high compressive strength
- Type 4 with hooks 44mm to hang in
- Type 5 with plug-in coupling to make it as long as you want.
- Depending on material (soft or hard) abrasion on the concrete surfaces may occur.

## Material:

- Soft (transparent): ethylene-vinyl acetate (PEVA)
- Hard (grey): Polyethylen (HDPE)



## Packaging:

Free of halogen-containing compounds, azo dyes, flame retardants.



TYP 2 – big and separable,  
also angled usable



TYP 3 – small



TYP 4 – small with hooks 44mm



TYP 5 – with plug in  
coupling

## Order information:

Item-No.	Type	Material	Width mm	Length mm	Strength mm	Pcs/ Bag	Pcs/ Box	Pcs/ Pallet
USP1	1	soft / hard	62	161	10	200	-	6.000
USP2	2	soft / hard	62	161	10	200	-	6.000
USP3	3	soft / hard	62	79	10	500	-	18.000
USP4	4	soft / hard	62	79	10	200	-	8.000
USP5	5	soft / hard	62	250	10	-	150	4.800

### INFORMATION:

The information given is the best that Nevoga researched and prepared at this time. The instruction sheets are recommendations. Correct use is the responsibility of the user. Nevoga does not guarantee the accuracy and completeness of the information. All rights for changes, mistakes, sentence and printing errors reserved.