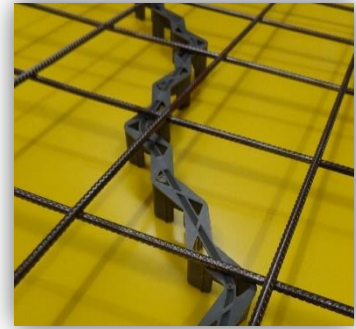


DRUWA

Application:

Extra strong spacer with high stability used for the lower reinforcement. A very good concrete flow due to its zigzag-shape and the straggled feet. By turning, the DRUWA can easily used for soft surfaces. Due to its special design the pallets are well stackable! Therefore optimal saving of freight costs and perfect using of storage room.



Installation:

The DRUWA distancers are installed diagonally to the reinforcement. Additional information about the location and the installation spacing are contained in the DBV-data sheet..

Material:

- Polyethylen (HD-PE)
- Free of CFC, HFC
- Without substances of very high concern according to the candidate list of ECHA (REACH Regulation)

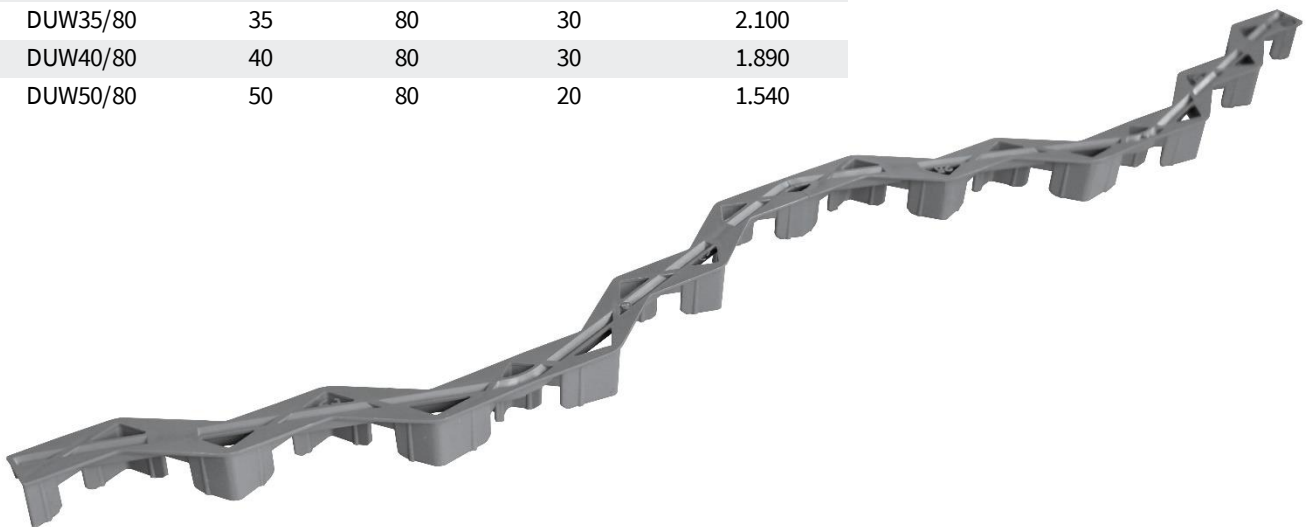


Packaging:

Free of halogen-containing compounds, azo dyes, flame retardants.

Order information:

Item-No.	concrete cover mm	Length cm	Pcs/ Bundle	Pcs/ Palett
DUW15/80	15	80	70	4.410
DUW20/80	20	80	60	3.780
DUW25/80	25	80	50	2.800
DUW30/80	30	80	40	2.520
DUW35/80	35	80	30	2.100
DUW40/80	40	80	30	1.890
DUW50/80	50	80	20	1.540



INFORMATION:

The information given is the best that Nevoga researched and prepared at this time. The instruction sheets are recommendations. Correct use is the responsibility of the user. Nevoga does not guarantee the accuracy and completeness of the information. All rights for changes, mistakes, sentence and printing errors reserved.