

PARTNER OF



Profil \ A k t i v



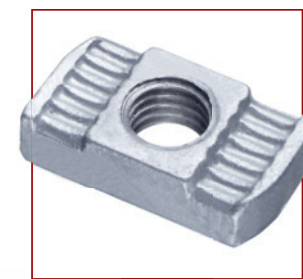
# CREATING SAFETY

ASSEMBLY AND FASTENING TECHNIQUES

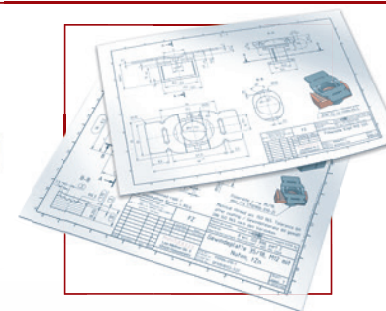
# TARGET-ORIENTED NOT ONLY IN PRODUCT TECHNOLOGY

>> Making safety a tangible experience is our primary goal. That's why PROFILAKTIV offers the right solution for every industry. Competent advice and joint development result in reliable special solutions that are barely visible in the finished object or in the machine and yet are absolutely resilient. Technical expertise and maximum safety are our top priorities. Our products deliver what they promise.

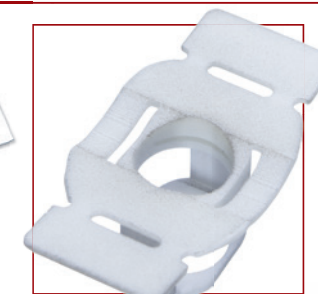
They support bridges, hold trains together and elsewhere they ensure efficient processes in production and manufacturing. You can rely on PROFILAKTIV throughout the entire value creation process - we are at your side from development to production and smooth logistics. Find out what we can do for your industry!



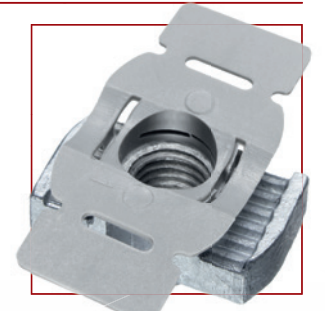
Starting point



Concept development



Prototyping

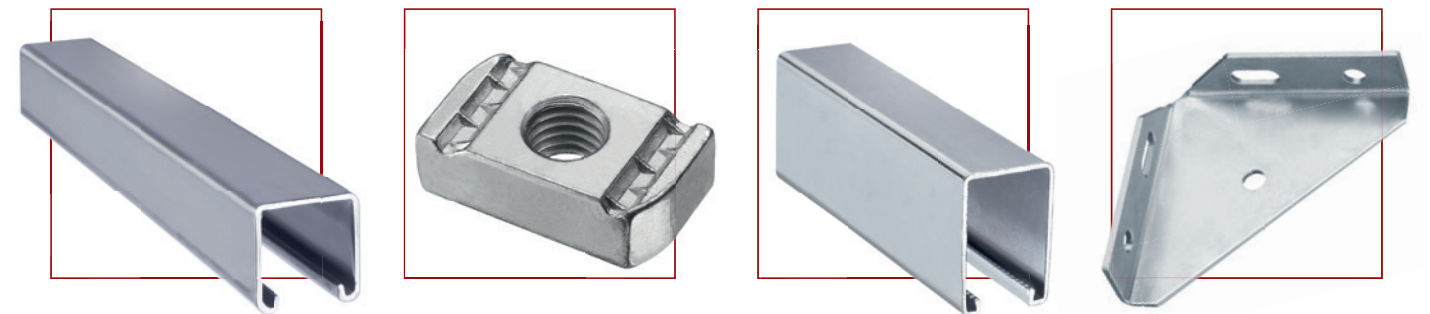


Series product



# RELIABLE NOT ONLY IN MATERIAL HANDLING

>> We hold together everything that moves you and your business forward. PROFILAKTIV assembly parts meet the highest demands and prove themselves even under constant loads in conveyor technology. Our declared aim is to guarantee efficient and smooth processes for your machines. With our profile systems and connecting elements made of steel and stainless steel, you can rely on precision and the best technical expertise.

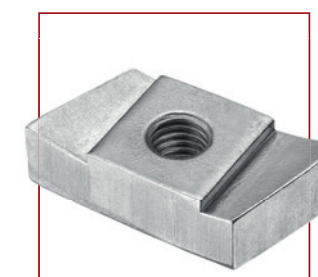
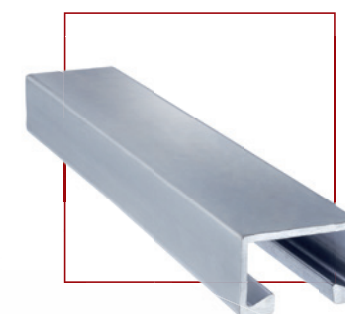
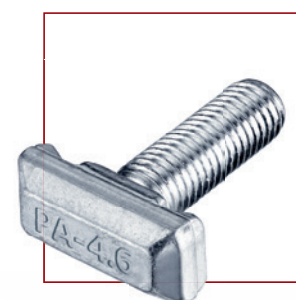




# PIONEERING NOT ONLY IN TRAFFIC ENGINEERING



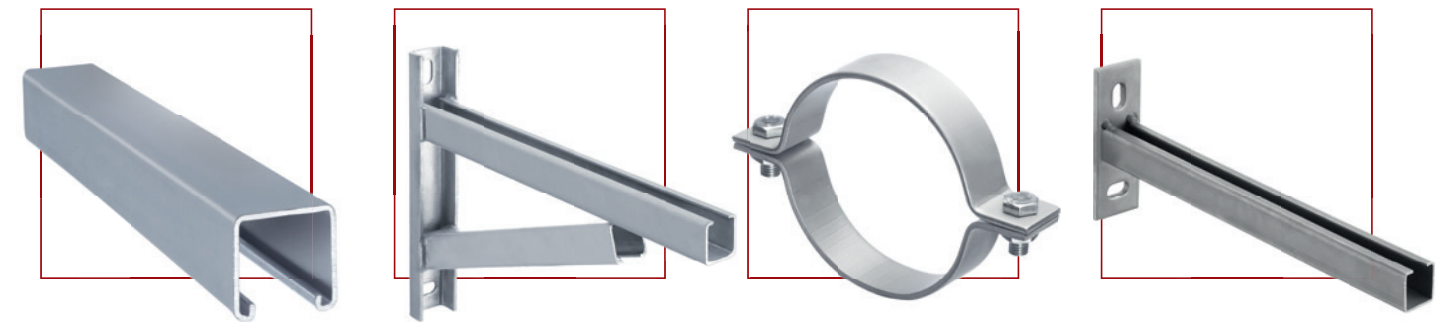
>> Whether tunnels, traffic signs or entire trains – PROFILAKTIV fastening solutions are there where they are needed. As a comprehensive partner, we are on hand to advise you on all aspects of traffic engineering and also take care of your questions after the project has been successfully completed. Together with you and our modern machinery, we realize solutions that are not only durable, but also ensure people's mobility in the future.





# RESILIENT NOT ONLY IN PIPELINE CONSTRUCTION

>> Nested pipe systems, complex fastenings and technology that has to withstand extreme pressure – we know all about it. As a development and production partner for pipeline construction, we attach great importance to professional structures and processes. Our certification assures you of the reliability and stability of our fastening solutions, even after years of operation.

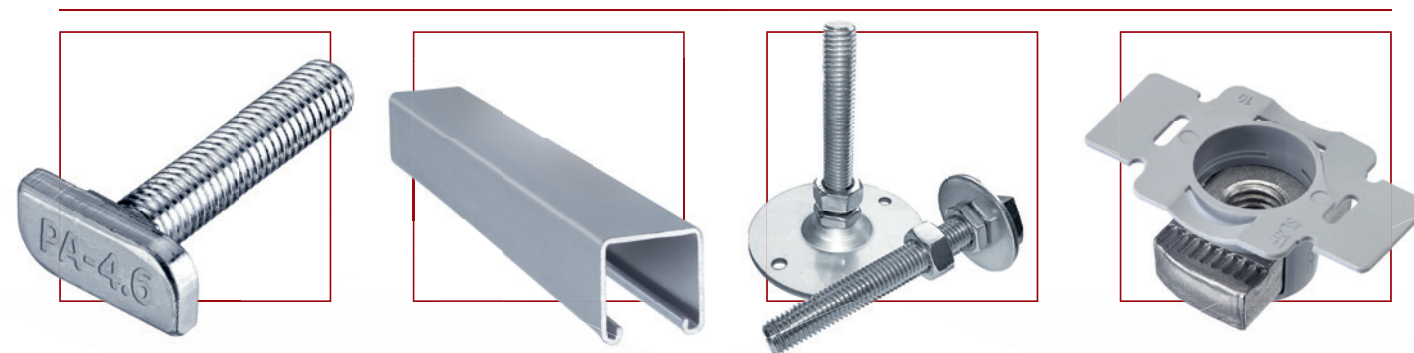




# INNOVATIVE NOT ONLY FOR HEAT PUMPS

>> Innovative technologies are the key to a sustainable future. This is why PROFILAKTIV has specifically positioned itself as a partner for modern building technology. Whether heat pump systems, energy-efficient ventilation systems or complex supply structures – secure and durable fastening solutions are crucial for a reliable and sustainable energy supply. Our steel and stainless steel mounting systems ensure maximum stability and efficiency, even under demanding conditions. We rely on robust designs that are flexibly adapted to different building types and technical requirements – from single-family homes to large commercial properties.

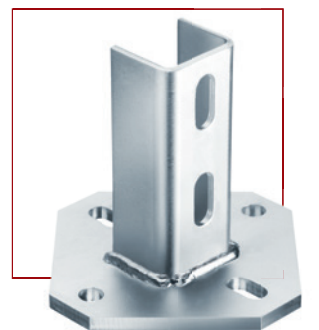
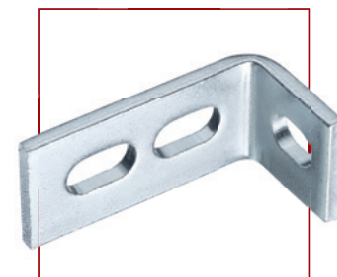
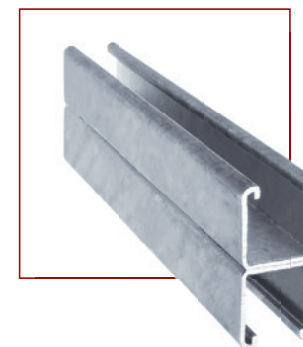
PROFILAKTIV actively contributes to the energy transition with innovative solutions. Our mounting systems not only ensure a long service life for the systems, but also economically viable and sustainable installations. In close cooperation with manufacturers and specialist planners, we develop concepts that make modern energy technology safe and sustainable – for greater efficiency, safety and sustainability in the building sector.





# DURABLE NOT ONLY IN BUILDING TECHNOLOGY

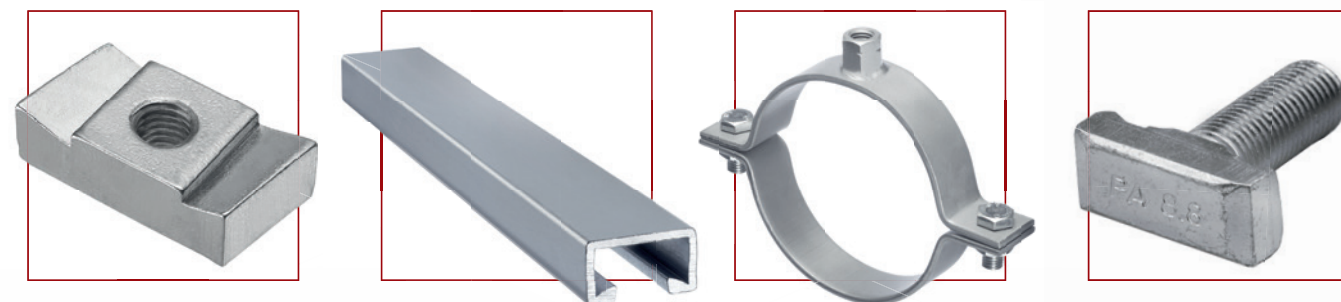
>> Visitors to an airport don't see it, people in an office don't notice it - but it supports the entire infrastructure of a building and ensures smooth processes and trouble-free everyday life. With PROFILAKTIV, you can rely on durable building technology systems. From small cables to large ventilation systems, our installation solutions have everything firmly under control. This also ensures economic stability. Thanks to long-term partnerships, the constant availability of our products and maximum flexibility, you can rely on us at all times.





# POWERFUL NOT ONLY IN PLANT AND MECHANICAL ENGINEERING

>> Mechanical and plant engineering underpins German industry. Whether automotive, printing machines or tool manufacturers - everywhere it is important that processes run smoothly, machines function and manufacturers can deliver even faster than before. This is why PROFILAKTIV offers fastening solutions that are made from high-quality raw materials and ensure long-lasting and effective performance. Wherever technical expertise, quality and, above all, safety are required, we are there to help.



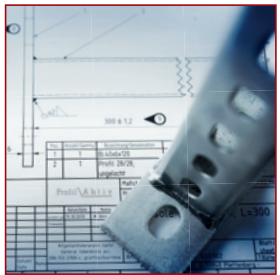


# EFFECTIVE NOT JUST IN SERVICE

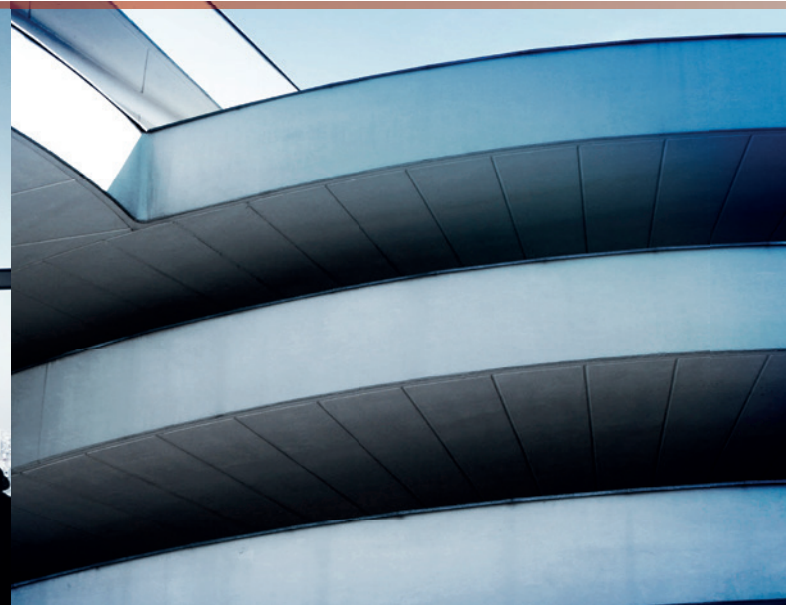


>> In order to meet your requirements, we have set up a service center that is able to respond to you at short notice with the help of state-of-the-art machinery. Here, pipe clamps are manufactured in special dimensions, hammer-head bolts are cut to a special length or special perforations are made in profiles. Continuous quality assurance in accordance with EN ISO 9001 also ensures that we can meet

even the highest requirements. Fully automated and with a perfectly equipped high-bay warehouse, with PROFILAKTIV you can rely on flexibility and a high delivery capacity. Short distances, direct contact persons and personal labeling on request complete the service.







## AMBITION

>> Every single employee works with passion and commitment every day to ensure high-quality profile systems and fasteners for assembly technology. Our ambition drives us forward and enables technical progress and innovative action. Product-oriented customer developments and special solutions lead us to success, which is based on goal-oriented and ambitious work.

## CURIOSITY

>> Only those who are courageous and open to questioning the status quo and breaking new ground can be innovative and thus survive in the market. That is why we are characterized by curiosity and a constant thirst for knowledge. This enables us to constantly adapt to new customer requirements and think ahead for the future. The continuous further training of our employees contributes greatly to this curiosity.

## CONSEQUENCE

>> We consistently pursue and achieve our goals. In order to live up to our own ambitious standards, a consistent approach is essential. This not only enables us to achieve what we aim for, but also to safeguard what we have achieved. Decisions such as retaining the company headquarters in Plettenberg and long-term planning underline our focus and create a trusting working relationship.

## SECURITY

>> Security combined with ambition helps to move in a well-considered and thoughtful direction. For us, respectful, cooperative and long-term collaboration with dialog partners is a basic prerequisite for sustainable success. At the same time, our employees are extensively involved with our customers, their industries and requirements in order to generate security for the company and the individual in the future.



PARTNER OF



PRETEC DANMARK A/S

Ådalen 6–12

4600 Køge, Denmark

+45 5666 2422

[www.pretec.dk](http://www.pretec.dk)

[info@pretec.dk](mailto:info@pretec.dk)

Profil / A k t i v

PROFILAKTIV GMBH

Adam-Opel-Straße 3

58840 Plettenberg, Germany

+49 2391 59431-0

[info@profilaktiv.com](mailto:info@profilaktiv.com)